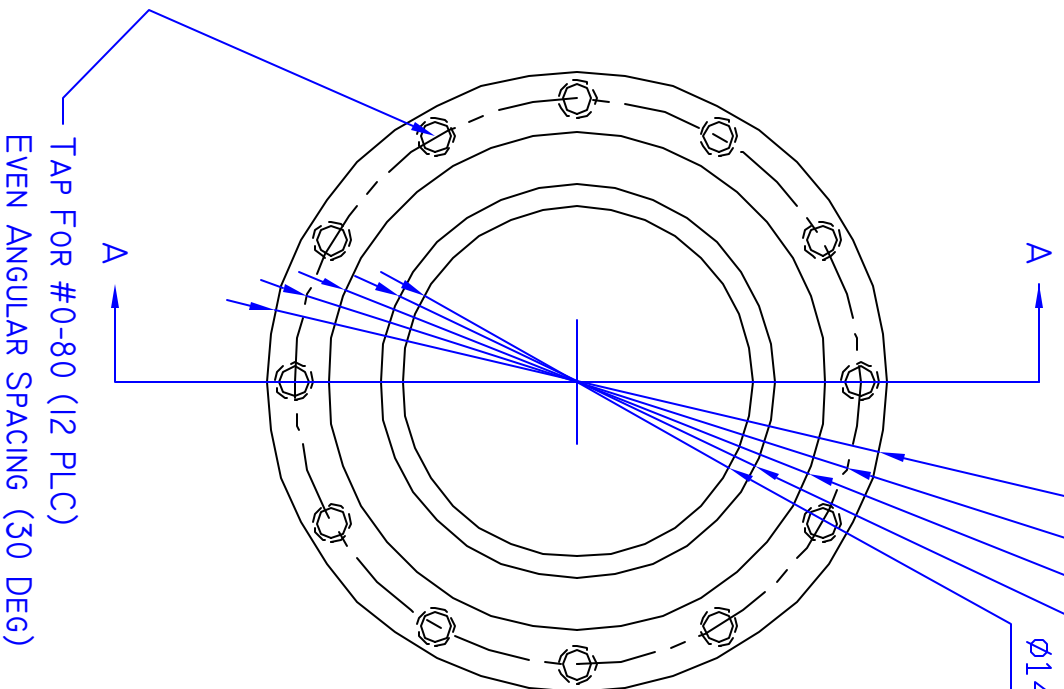


XM-30-13-0 PART A  
WET CELL STXM 4  
MATL: ALU  
DIM ARE MM [INCH]  
4 PCS  
MICHAEL.FESER@SUNYSB.EDU



TAP FOR #0-80 (12 PLC)  
EVEN ANGULAR SPACING (30 DEG)

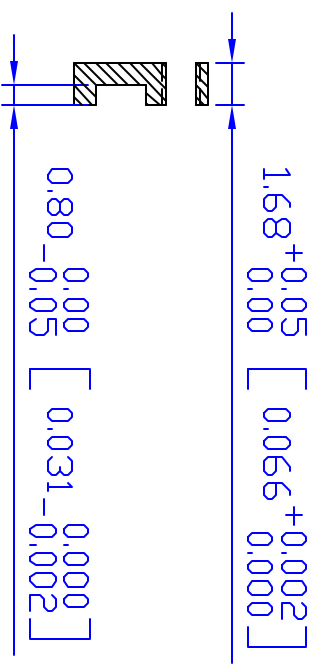
$\phi 25.0 \pm 0.2$  [ $\phi 0.984 \pm 0.008$ ]

$\phi 22.8 \pm 0.2$  [ $\phi 0.898 \pm 0.008$ ]

$\phi 20.1 \pm 0.5$  [ $\phi 0.789 \pm 0.020$ ]

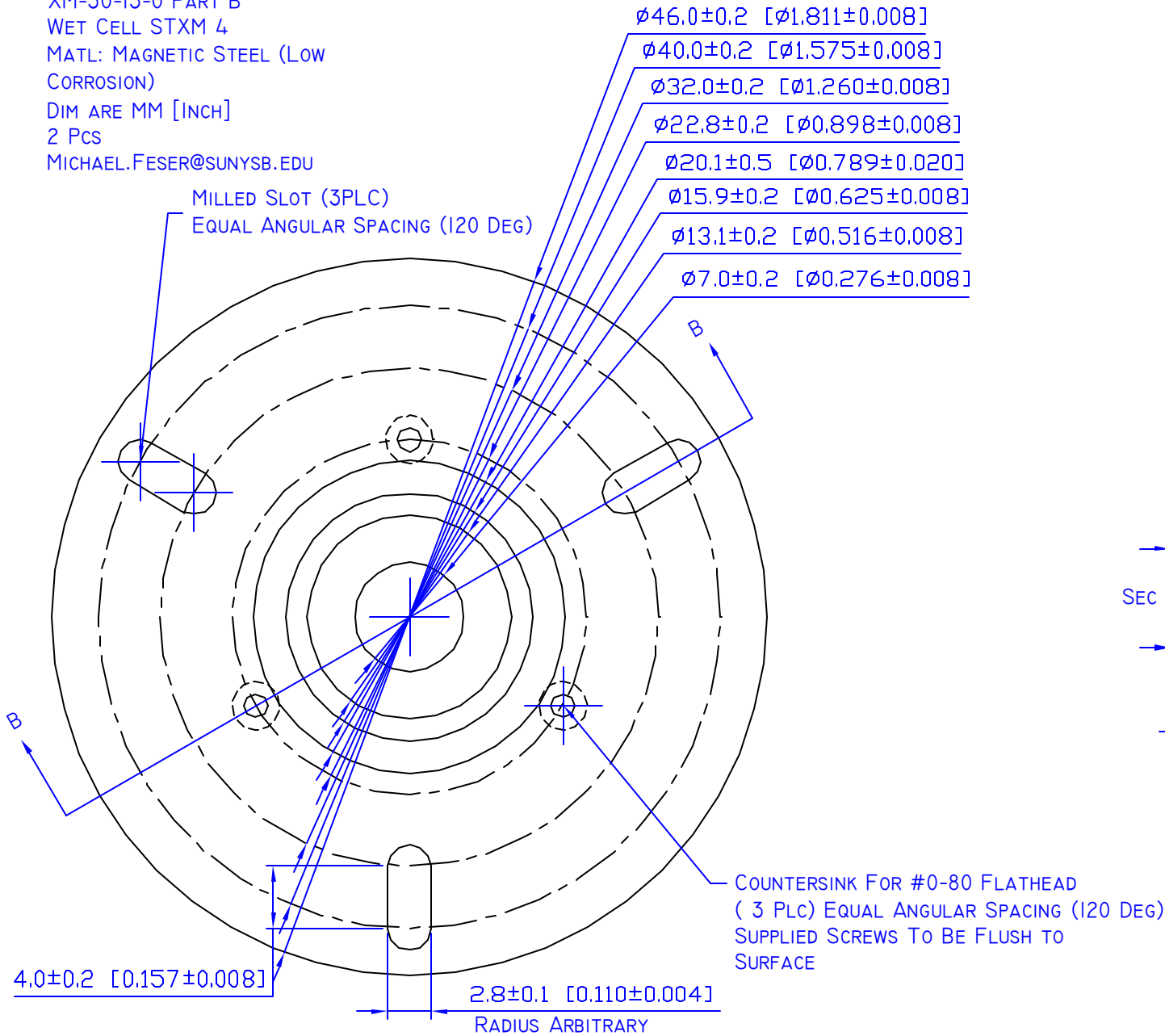
$\phi 15.9 \pm 0.2$  [ $\phi 0.625 \pm 0.008$ ]

$\phi 14.1 \pm 0.2$  [ $\phi 0.555 \pm 0.008$ ]

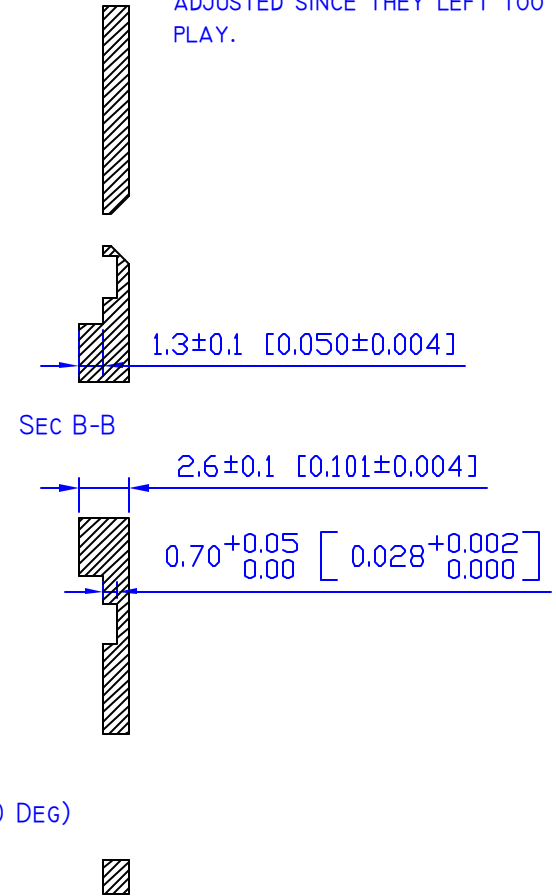


SEC A-A

XM-30-13-0 PART B  
 WET CELL STXM 4  
 MATL: MAGNETIC STEEL (LOW  
 CORROSION)  
 DIM ARE MM [INCH]  
 2 Pcs  
 MICHAEL.FESER@SUNYSB.EDU



REV. B:  
 THE O-RING DID NOT HAVE ENOUGH  
 SPACE. THE DIA OF THE O-RING  
 GROOVE HAS BEEN INCREASED AS WELL  
 AS THE DEPTH. TOLERANCES HAVE BEEN  
 ADJUSTED SINCE THEY LEFT TOO MUCH  
 PLAY.



XM-30-13-0 PART C  
WET CELL STXM 4  
MATL: STAINLESS STEEL SHIM 0.025  
[0.001] THICKNESS  
DIM ARE MM [INCH]  
100 Pcs  
MICHAEL.FESER@SUNYSB.EDU

