

PHY 252 Lab 8: Gas particle detectors

Spring 2008

This experiment has two main objectives. First, we will become familiar with the characteristics of the Geiger-Müller (GM) tube, including the properties of threshold, starting and operating voltages, GM plateau region and plateau slope. Then we will use the GM tube to perform a simple statistical experiment for the purpose of studying some of the techniques of statistical analysis.

1 Apparatus

The basic GM circuit diagram is shown in Fig. 1. The power supply and counter are one unit. The GM tube itself consists of a cylindrical outer shell which serves as a cathode and is on ground potential. In the center it has an axially mounted wire serving as an anode. The cylinder is filled with an inert gas (typically Argon) at low pressure plus a small amount of “quenching” gas (e.g. ethyl alcohol).

A DC power supply provides a voltage across the tube in the range of a few hundred to over a thousand Volts depending on the requirements of the particular tube. Caution: The front window of the tube is very thin and delicate and should never be touched.

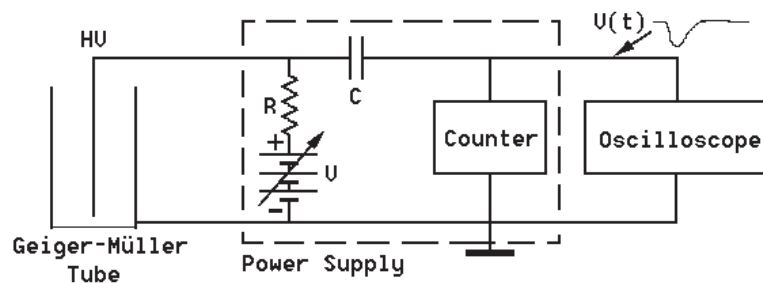


Figure 1: Schematic for our gas-based particle detector which can be operated in the Geiger-Müller mode.

Radiation entering the tube can ionize some of the gas atoms, thereby freeing electrons which are accelerated towards the center wire by the electric field gaining enough energy to cause further ionizations. The result is a “cascade” or “avalanche” effect which produces a current pulse through the tube. This current pulse causes a voltage pulse across the resistor R , which is then used to

trigger a counting device, recording the number of pulses. We are thus able to count the number of ionizing particles entering the tube. There is, however, no information about the initial particle energy. An oscilloscope is connected to the system to allow us to visually observe the pulses from the tube. The purpose of the quenching additive to the gas is to effectively absorb UV-photons emitted from the electrodes when the ions produced in the multiplication process impact on the electrodes. Such photons may otherwise liberate secondary electrons (via the photo-electric effect) which may initiate the avalanche process all over again, thereby leading to catastrophic breakdown of the tube (*i.e.*, a spark).

2 Procedure

1. Place a radioactive source near the GM tube. Note the operating voltage listed on the tube. Make an exploratory study of the effect of turning up the voltage across the tube. **Do not exceed the operating voltage by more than about 100 V!** Note the appearance of the pulses on the oscilloscope and the behaviour of the counter.
2. Systematically increase the voltage in steps of about 50 V, starting at 500 V. Decrease the step size as necessary to see the shape of the curve you are graphing. For each voltage setting, record and plot the counting rate (counts/second) and the pulse height as seen on the oscilloscope. Determine the GM “threshold voltage” (the voltage at the beginning of the GM plateau). Also measure the *slope* of the plateau (increase in counting rate per 100 V).
3. Arrange a source to give about 5–6 counts per 10 sec interval (perhaps room background will give you sufficient counting rate). Record the number of counts N per 30 sec interval for as many intervals as you can. Plot the number of counts per 30 sec interval as the abscissa and the number of times that number of counts occurred as the ordinate of a graph.

Determine the *mean* number of counts \bar{N} and the standard deviation σ . The result should approximate the “Poisson” distribution, for which the probability of observing N counts in a given time interval is given by

$$P(N) = \frac{e^{-\bar{N}} \bar{N}^N}{N!} \quad \text{with} \quad \sigma = \sqrt{\bar{N}}. \quad (1)$$

Compare your graph with this expression. Also compare your results with Fig. 2.

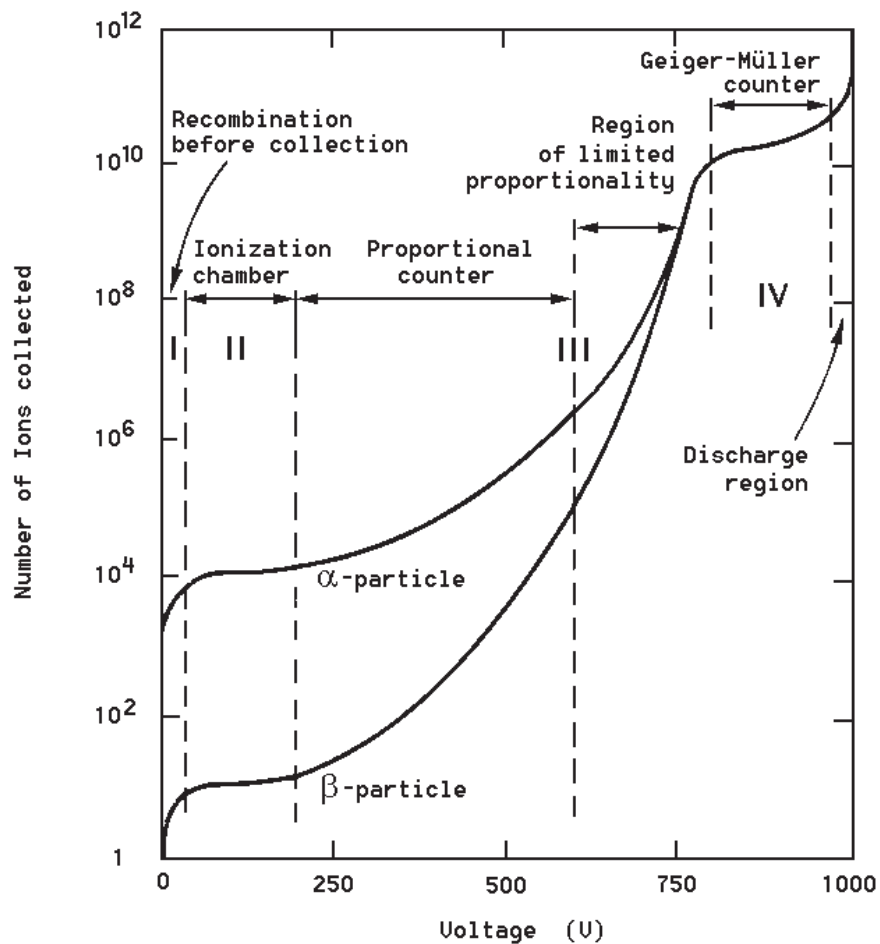


Figure 2: Gain of a gas-based particle detector as a function of voltage. The curves are for α -particles (He nuclei) and β -particles (electrons). Note the three regions of operation as an (I) ionization counter, (II) proportional counter, and (IV) Geiger-Müller counter. The exact voltage scale depends on detector and wire geometry, gas used, and so on.